

## GOB786v0

## TECHNICAL DOCUMENT- CONTROL GEAR

Supplier's name or trade mark:	MEGAMAN GmbH
Supplier's address	Halskestraße 22-26, AircomParc A140880 RatingenGermany

## Model identifier

Model Number	GOB786v0
General description	Input: AC220~240 Output: 9.45W DC500 DC 18mA

## Technical Document

Maximum output power	9.45W
Type of light source(s)	LED
Efficiency in full-load	78%
No-load power (Pno)	not applicable
Standby Power (Psb)	N/A
Networked Standby Power (Pnet)	N/A
Outer dimensions in mm	
Height	20
Width	46
Depth	62
Mass in grams	72
Standards Compliance	EN 61347-1:2015 & EN61347-2-13:2014

## Warning

A list of compatible dimmers shall be provided on the website [www.megaman.cc](http://www.megaman.cc)

MEGAMAN | WEEE - Green Room | LED, Energy-efficient & Eco-friendly Lighting, Restriction of Hazardous Substance

<https://www.megaman.cc/resources/green-room/weee>

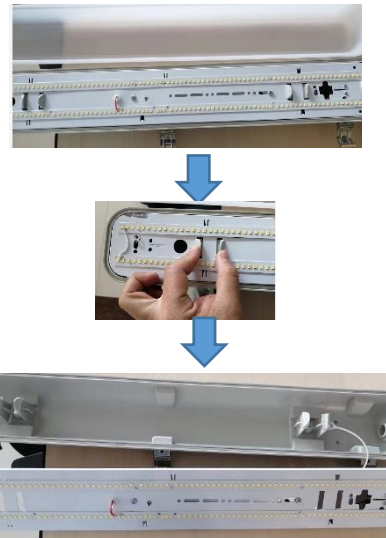
## Identification and signature

Removable Light Source			
Model No.	Light Source Model identifier	Input Voltage (V)	Input Current (mA)
FOB78400v0	SOB784v0840	DC72	250
FOB78400v0-ms	SOB784v0840	DC72	250
FOB78400v0-em	SOB784v0840	DC 72	250
FOB78400v0-em/ms	SOB784v0840	DC 72	250
FOB78500v0	SOB785v0840	DC 108	250
FOB78500v0-ms	SOB785v0840	DC 108	250
FOB78500v0-em	SOB785v0840	DC 108	250
FOB78500v0-em/ms	SOB785v0840	DC 108	250
FOB78600v0	SOB786v0840	DC 180	175
FOB78600v0-ms	SOB786v0840	DC 180	175
FOB78600v0-em	SOB786v0840	DC 180	175
FOB78600v0-em/ms	SOB786v0840	DC 180	175
FOB79200v0	SOB792v0840	DC 108	250
FOB79200v0-em	SOB792v0840	DC 108	250
FOB79300v0	SOB793v0840	DC 108	350
FOB79300v0-ms	SOB793v0840	DC 108	350
FOB79300v0-em	SOB793v0840	DC 108	350
FOB79300v0-em/ms	SOB793v0840	DC 108	350
FOB79400v0	SOB794v0840	DC 108	480
FOB79400v0-ms	SOB794v0840	DC 108	480
FOB79400v0-em	SOB794v0840	DC 108	480
FOB79400v0-em/ms	SOB794v0840	DC 108	480
FOB78600v1	SOB786v0840	DC 180	175
FOB78600v1-ms	SOB786v0840	DC 180	175
FOB78600v1-em	SOB786v0840	DC 180	175
FOB78600v1-em/ms	SOB786v0840	DC 180	175

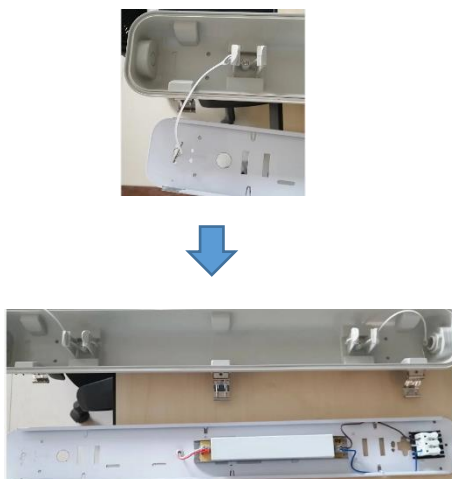
Step 1: Loosen the metal clips,Open the difusser



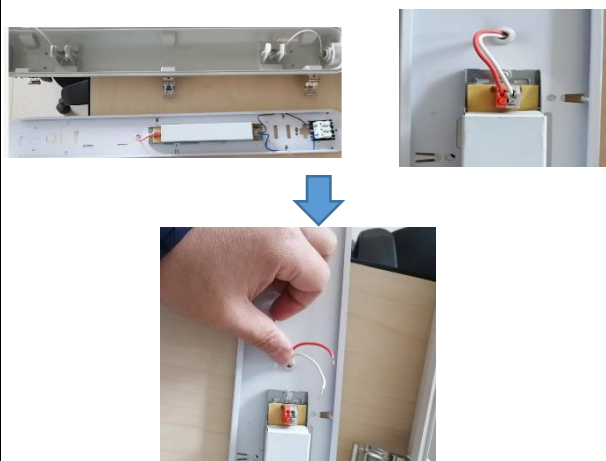
Step 2: Take out the LED module



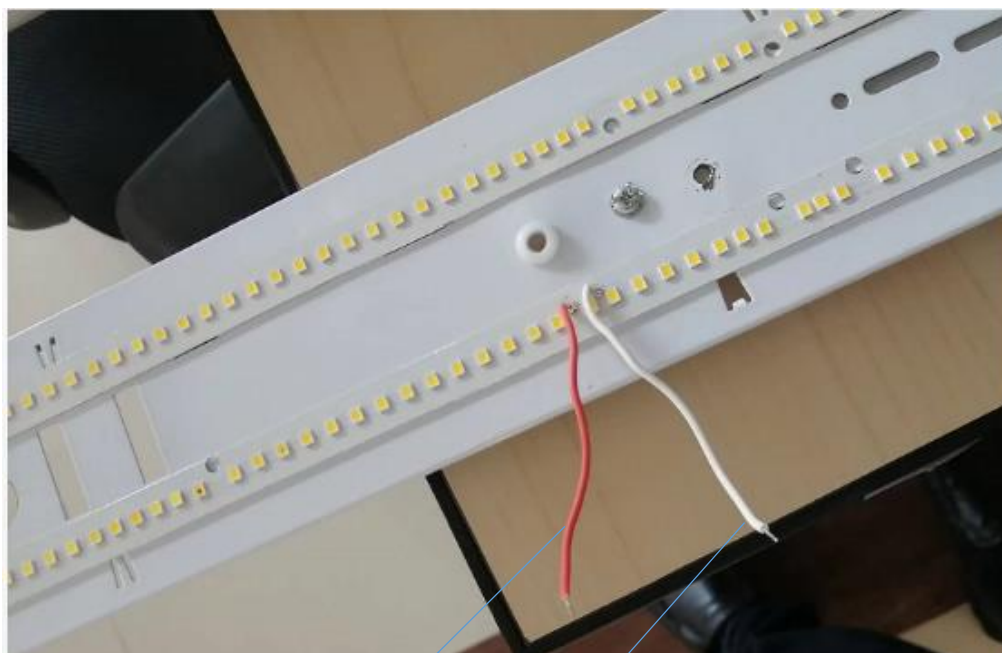
Step 3: Untie the safety rope



Step 4: Unplug the power cord from Driver



## Step 5: Test the light source module



LED+

LED-