

GCL743V0

TECHNICAL DOCUMENT- CONTROL GEAR

Supplier's name or trade mark:	MEGAMAN GmbH
Supplier's address	Halskestraße 22-26, AircomParc A140880 RatingenGermany

Model identifier

Model Number	GCL743V0
General description	Input: AC220~240 Output: 13.5W DC165 DC 84mA

Technical Document

Maximum output power	13.5W
Type of light source(s)	LED
Efficiency in full-load	91%
No-load power (Pno)	not applicable
Standby Power (Psb)	N/A
Networked Standby Power (Pnet)	N/A
Outer dimensions in mm	
Height	25
Width	37.4
Depth	51
Mass in grams	45
Standards Compliance	EN 61347-1:2015 & EN61347-2-13:2014

Warning

A list of compatible dimmers shall be provided on the website www.megaman.cc

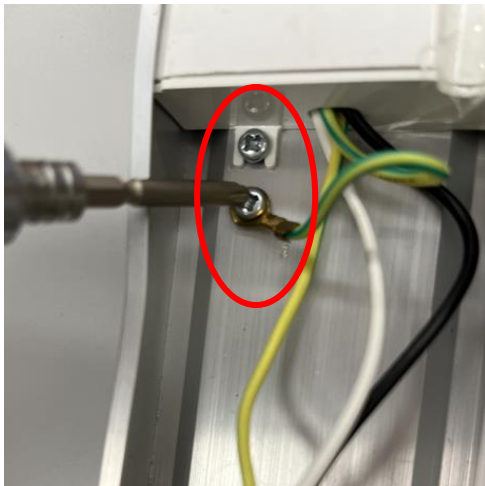
MEGAMAN | WEEE - Green Room | LED, Energy-efficient & Eco-friendly Lighting, Restriction of Hazardous Substance

<https://www.megaman.cc/resources/green-room/weee>

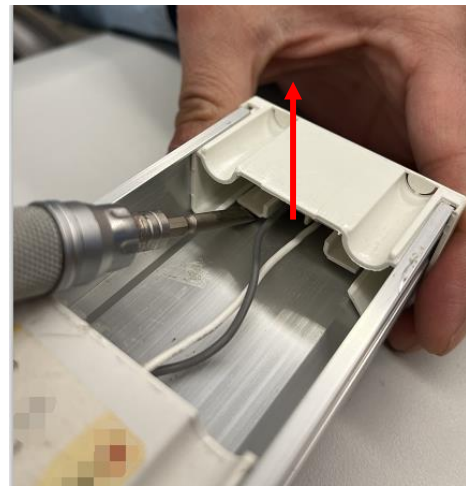
Identification and signature

Removable Light Source			
Model No.	Light Source Model identifier	Input Voltage (V)	Input Current (mA)
FIB74100v0	SIB741v0830	DC 126	218
FIB74100v0	SIB741v0840	DC 126	218
FIB74100v0	SIB741v0865	DC 126	218
FIB74200v0	SIB742v0830	DC 144	295
FIB74200v0	SIB742v0840	DC 144	295
FIB74200v0	SIB742v0865	DC 144	295
FIB74300v0	SIB743v0830	DC 171	335
FIB74300v0	SIB743v0840	DC 171	335
FIB74300v0	SIB743v0865	DC 171	335

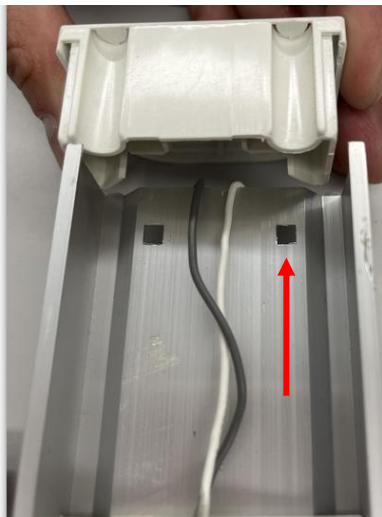
Step 1: Remove the bezel and the screws.



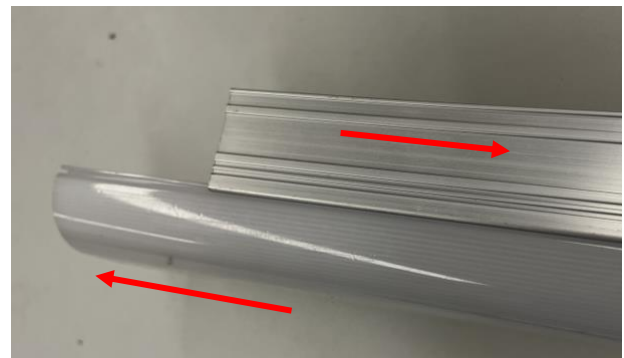
Step 2: Slide the driver and remove the plastic cover.



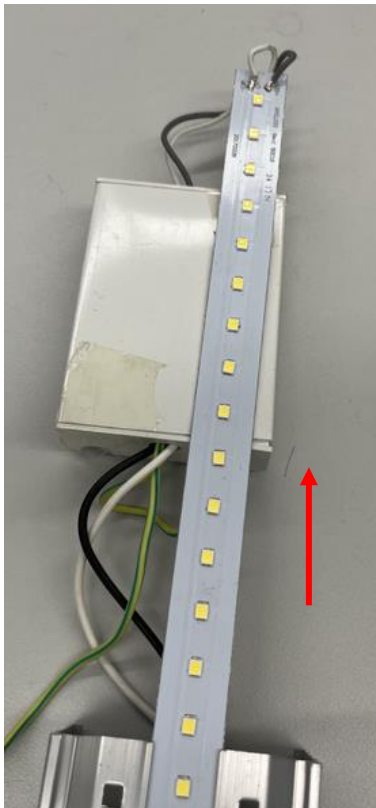
Step 3: Remove plastic cover.



Step 4: Remove the lens.



Step 5: Slide out the LED PCB.



Step 6: Cut the wires.



Step 7: Removable light source.



Step 8: Removable control gear.

